

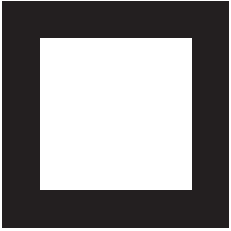


**PRAUSA**<sup>®</sup>  
CAMPI GRAFIC,S.A.

 902 197 557

 902 900 809

www.campigrafic.es

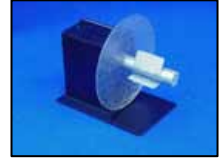


# MC-10 & MC-11

## Popular & Economical “MINI-CAT” Label Rewinders

The MINI-CAT (MC) Label Rewinders are the world’s most popular low-price Label Rewinders. They are capable of rewinding label rolls up to 125mm (5 “) wide (115 mm or 4½ -inches for MC-11), up to 220 mm (8.6”) in diameter at speeds up to 25 cm/sec (10-ips).

The MINI-CATs can also be used as Label Unwinders.



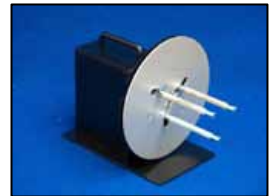
The MINI-CAT-10 (**MC-10**) has a 76 mm (3”) diameter core holder. You can also use the included “coreless rewind” feature to rewind directly on-shaft.

**MC-10 (above):** You can use the included 76 mm (3”) core holder, or rewind “coreless” directly “on-shaft” without any label core!

The MINI-CAT-11 (**MC-11**) includes a precision-crafted Adjustable Core Holder that adjusts in seconds to accept any core diameter from 25- to 101-mm (1” to 4”).

**MC-11 (below):** Rewind on any core from 25 to 101 mm (1” to 4”) in diameter.

Both MINI-CATs use LABELMATE’s proprietary Constant Adjustable Torque™ (“CAT”) technology to achieve impressive, reliable performance at an unprecedented low price. A special motor, designed specifically for the MINI-CATs, offers bi-directional operation and trouble-free performance. A switch conveniently controls the amount of rewind force. No awkward, troublesome belts or clutches are used and no speed adjustments are required. Your MINI-CAT automatically adjusts to any printer speed up to 25cm/sec (10-ips) and even allows label back-feeding automatically if your printer requires it.

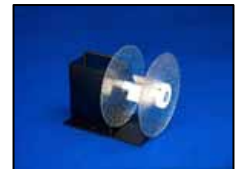


The MINI-CATs have an inner label flange to keep the edge of the label web aligned as the labels are being rewound. Also available is an optional Adjustable Paper Guide (**APG-MC**) that mounts directly to the **MC-10** or **MC-11** base plate and guides the outer edge of the labels. For the **MC-10**, an optional plastic Outer Flange (**MC-10 2<sup>nd</sup> Flange**) is also available. See photos below right.

Rugged steel construction allows your MINI-CAT to simply be set in place near your label printer. Special anti-slip feet keep the unit from moving. Put a LABELMATE MINI-CAT to work for you today and enjoy a new dimension in label rewinding convenience and reliability.



MC-11 with APG-MC



optional Outer Flange

### **MC-10 & MC-11 SPECIFICATIONS:**

**Label Width:** **MC-10** Up to 124 mm (4.5”). **MC-11** Up to 115 mm (5”).

**Maximum Label Roll Weight:** 3.9 Kg (8.5-lbs).

**Label Roll Diameter:** Up to 220 mm (8.6”).

**Core Diameter:** **MC-10:** 76 mm (3”) or coreless. **MC-11:** Any from 25 to 101 mm (1” to 4”) or coreless.

**Speed:** Up to 25+ cm/sec (10-ips). Switch adjustable rewind force. No speed adjustments are required.

**Start/Stop:** Convenient ON-OFF switch. **Direction:** Bi-directional.

**Power Requirements:** 220-240 vac 50Hz. UL / CSA Listed Power Supply. 120vac 60Hz. 20 va. units are available at the same price.

**Size:** H-W-D 229 x 152 x 279-mm (9 x 6 x 11”). **Weight:** 5.9 kg (13-lbs.).

**Optional:** Adjustable Paper Guide (**APG-MC**) Arm for either the MC-10 or MC-11. Plastic Outer Flange (**MC-10 2<sup>nd</sup> Flange**) for the MC-10 only.

**Warranty:** **5-Year Parts and Labor Limited Warranty**, the longest in the industry! (One-year Limited Warranty on included Power Supply Module.).

Thousands of LABELMATE **MINI-CAT** Rewinders are in daily use around the world. Order yours today for new low-cost rewinding convenience!